

R 4804

COMPOSITION:

- RAMIE YARN
- PTFE IMPREGNATION
- LUBRICANT

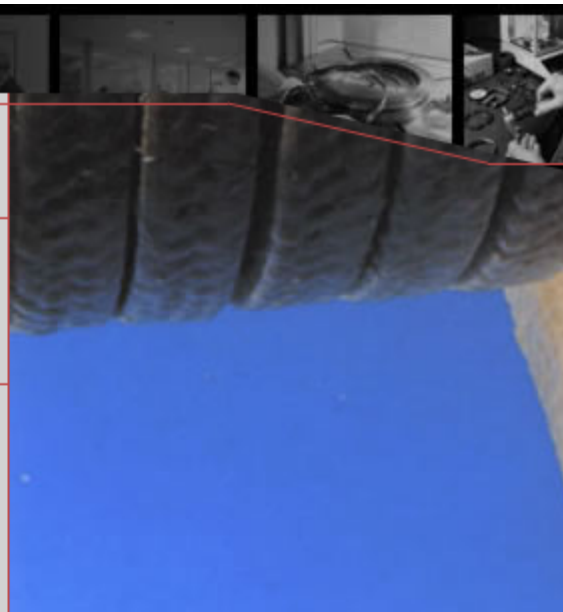
FEATURES:

PACKING MADE FROM PURE RAMIE YARNS WITH A SPECIAL PTFE IMPREGNATION.



BEING SOFT AND PLIABLE, THIS PACKING PRACTICALLY ADHERES TO SHAFTS AND SLEEVES AND IT IS EASILY ADJUSTABLE. IT GIVES EXCELLENT RESISTANCE TO OILS, GREASES, SALT WATER, SOLVENTS, ETC.

APPLICATIONS:

ON CENTRIFUGAL AND PISTON PUMPS, IN BREWERIES, PAPER MILLS, REFINERIES, SUGAR MILLS AND FOOD INDUSTRY.



TECHNICAL DATA

(*)			
T	°C	-50 +120	
p	bar	100	60
V	m/s	1,5	2
pH		4 ÷ 11	

(*) Do not use the product to the maximum temperature associated without consulting the manufacturer.

size mm	size inch	kg/box	lbs/box	mt/box	ft/bo
3	1/8	1,0	2,2	79,4	260
4	-	1,0	2,2	44,6	146
5	3/16	1,0	2,2	28,6	94
6	-	2,5	5,5	49,6	163
6,5	1/4	2,5	5,5	42,3	139
8	5/16	2,5	5,5	27,9	92
9,5	3/8	2,5	5,5	19,8	65
10	-	2,5	5,5	17,9	59
11	7/16	2,5	5,5	14,8	48
12	-	2,5	5,5	12,4	41
12,7	1/2	2,5	5,5	11,1	36
14	9/16	5,0	11,0	18,2	60
16	5/8	5,0	11,0	14,0	46
17,5	11/16	5,0	11,0	11,7	38
18	-	5,0	11,0	11,0	36
19	3/4	5,0	11,0	9,9	32
22	7/8	5,0	11,0	7,4	24
25,5	1	5,0	11,0	5,5	18